

A satellite-style map of New Zealand is shown against a dark blue background. The map is overlaid with several concentric yellow circles representing seismic waves emanating from a central point in the North Island, which is the epicenter of an earthquake. The text 'WELLINGTON EARTHQUAKE NATIONAL INITIAL RESPONSE PLAN' is superimposed in large, bold, white letters with a black outline across the upper portion of the map.

# WELLINGTON EARTHQUAKE NATIONAL INITIAL RESPONSE PLAN

Tane Woodley  
Ministry of Civil Defence and Emergency Management

# Outline

- Current Situation
- Background
- Context
- Development
- Plan Outline
- Vulnerabilities
- From Here...
- Questions

# Current Situation

- Ratified on 28<sup>th</sup> April 2010
- It's Official!
- Published on MCDEM website
- Some agencies have started planning

# Background



Exercise Capital Quake 2006

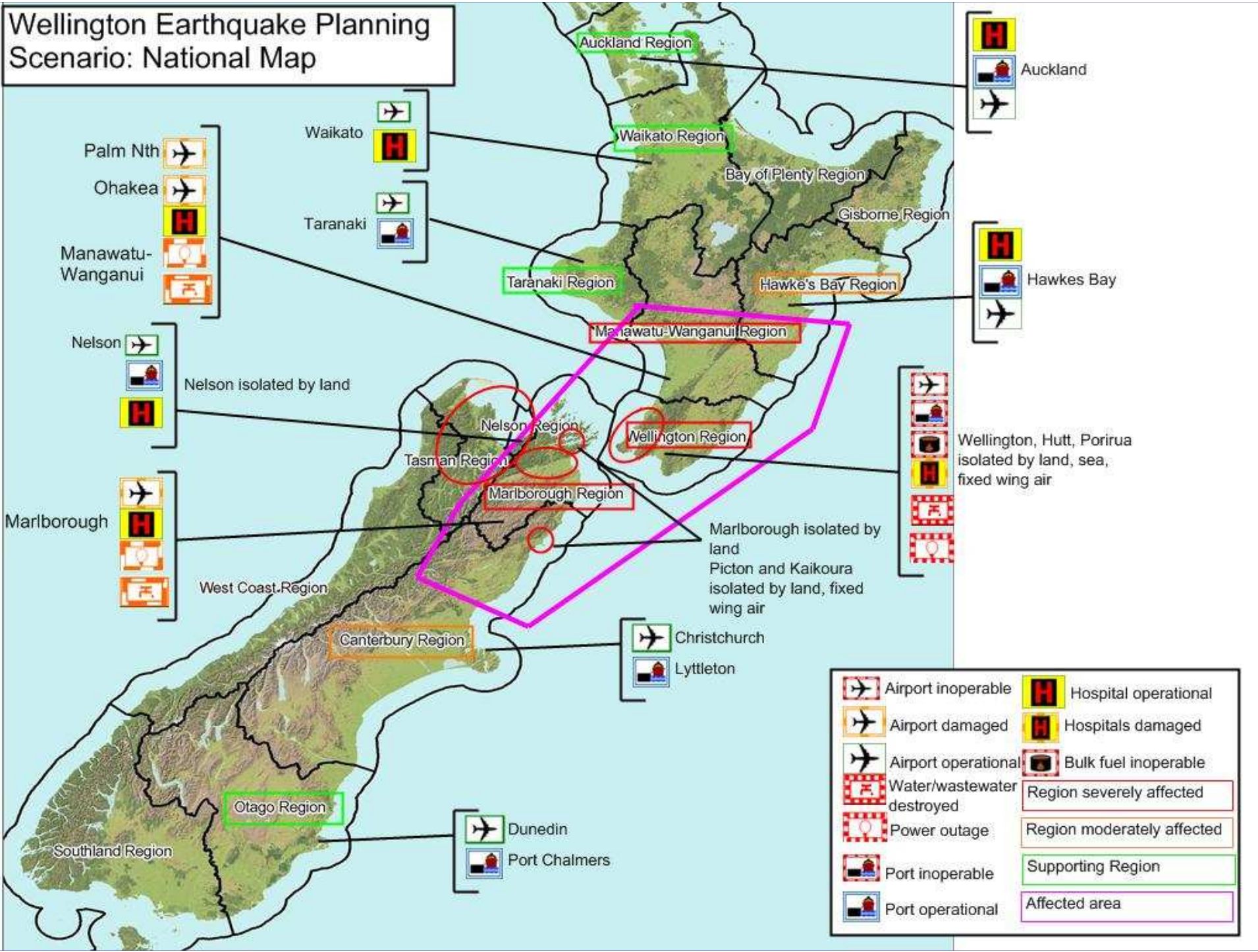
# Plan Development

- Scenario Development (Feb 2009)
- Collective Planning Workshop (March 2009)
- Document Reviews (two)
- Individual Workshops
- CE Review (Nov 2009)

# Scenario Description

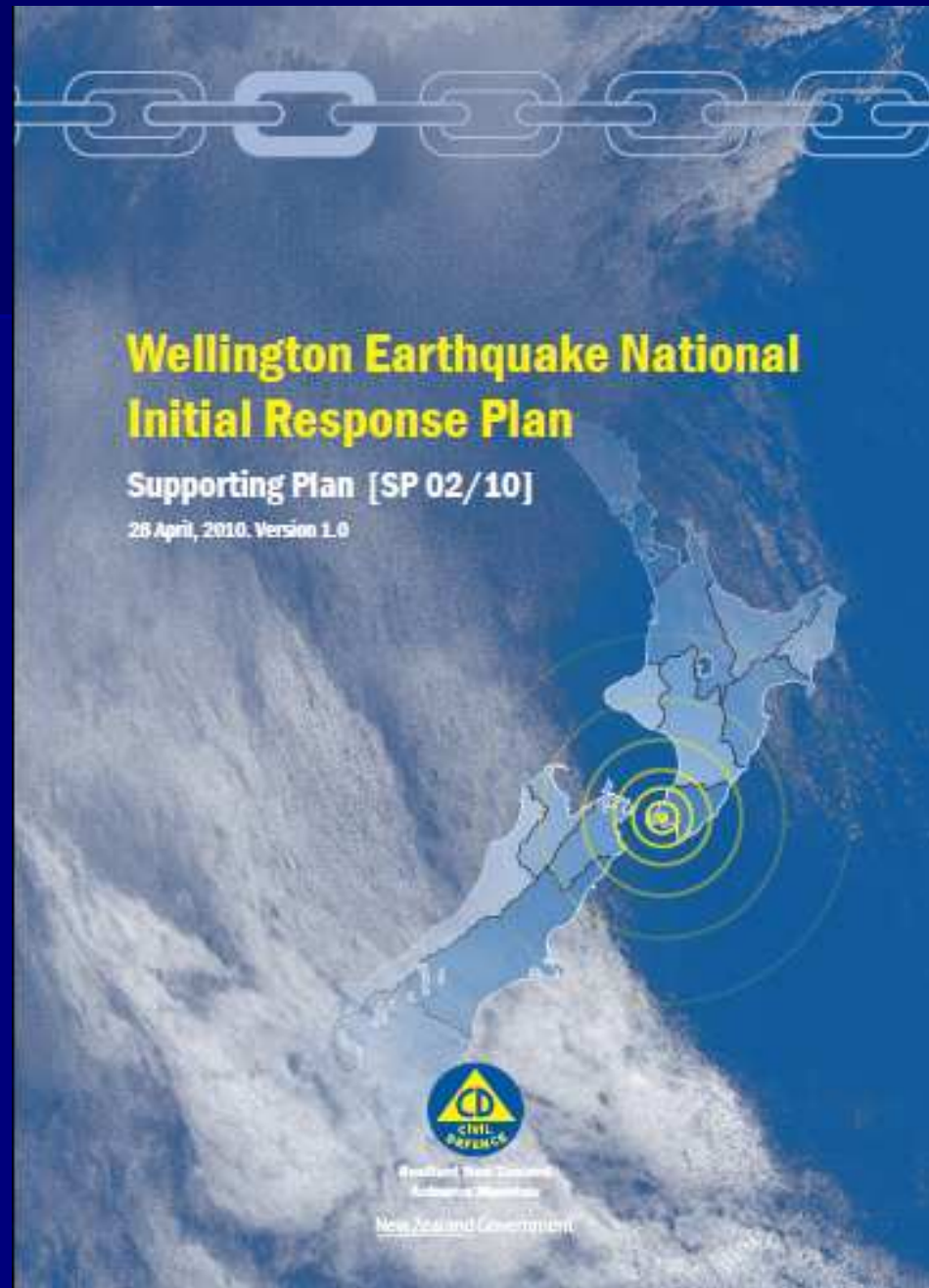


# Wellington Earthquake Planning Scenario: National Map



Airport inoperable	Hospital operational
Airport damaged	Hospitals damaged
Airport operational	Bulk fuel inoperable
Water/wastewater destroyed	Region severely affected
Power outage	Region moderately affected
Port inoperable	Supporting Region
Port operational	Affected area

# The Plan





# NATIONAL CDEM PLAN FRAMEWORK

WELLINGTON  
EARTHQUAKE NATIONAL  
INITIAL RESPONSE PLAN

WELLINGTON  
EARTHQUAKE NATIONAL  
ACTION PLAN

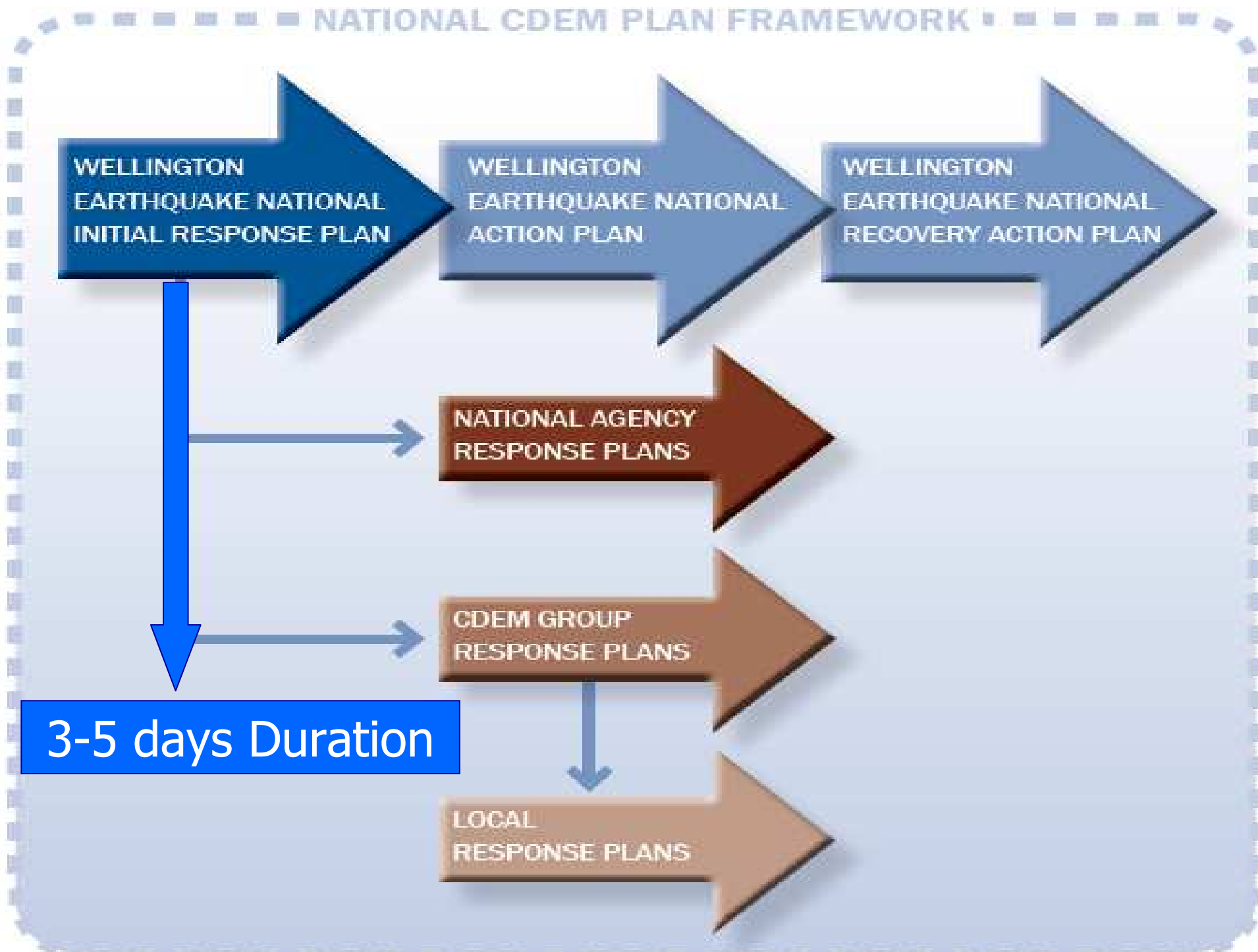
WELLINGTON  
EARTHQUAKE NATIONAL  
RECOVERY ACTION PLAN

NATIONAL AGENCY  
RESPONSE PLANS

CDEM GROUP  
RESPONSE PLANS

LOCAL  
RESPONSE PLANS

3-5 days Duration



WENIRP

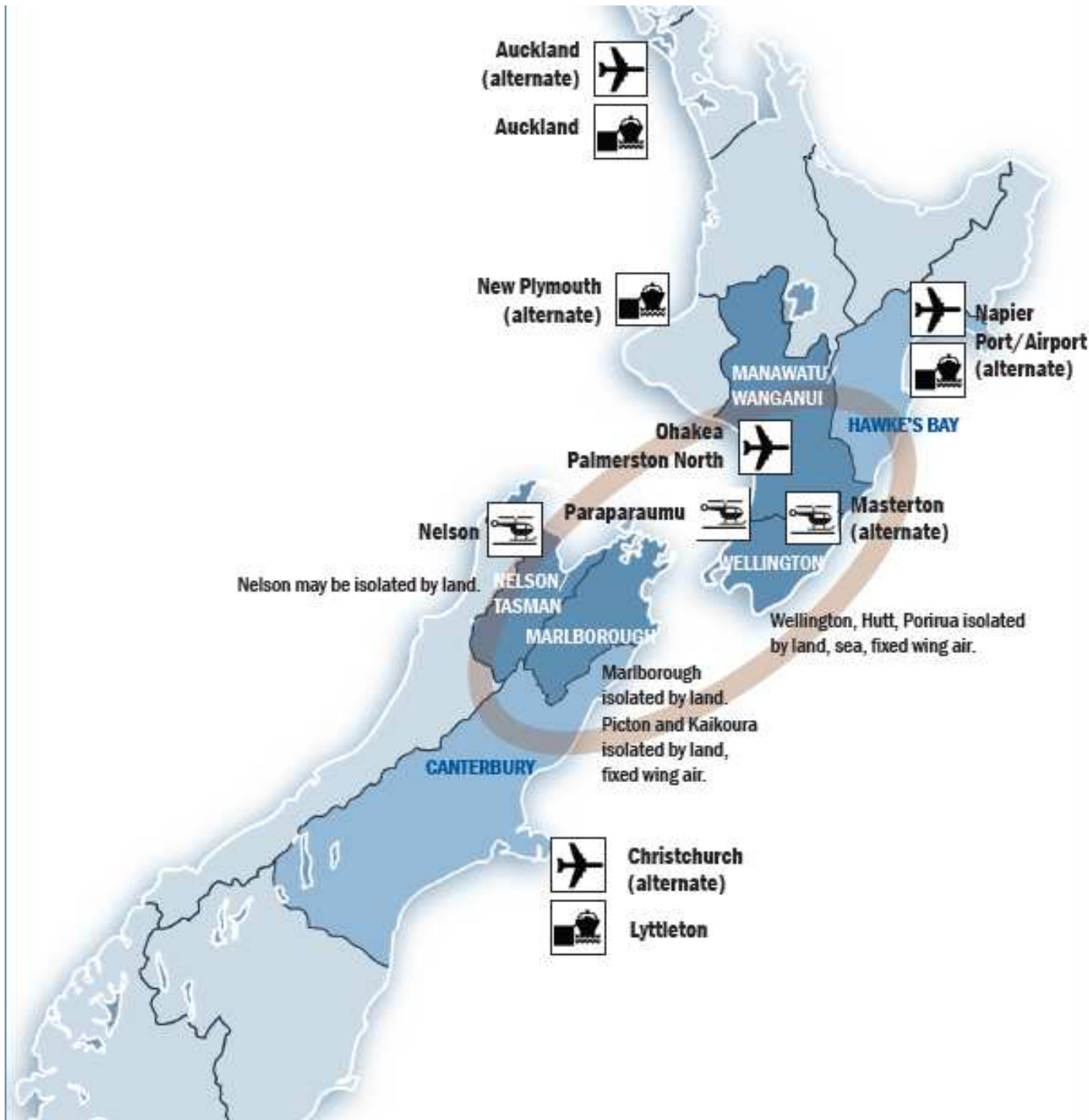
National Agency Plans

CDEM Group Plans

Local Plans

# Key Tasks

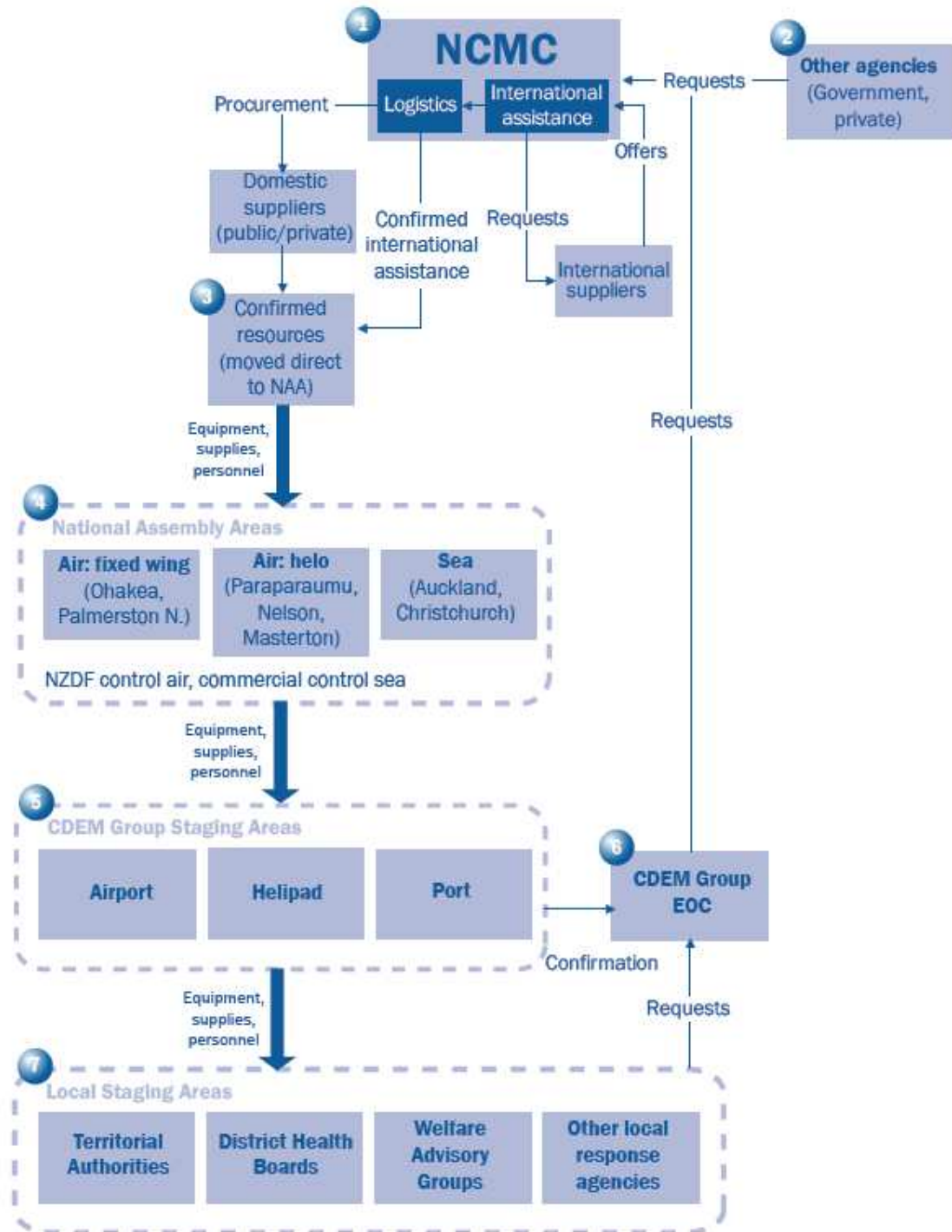
- Information gathering
- Provision of healthcare
- Access into isolated areas
- Provision of food, water, shelter
- Public information
- Rescue and firefighting
- Movement control
- Communications



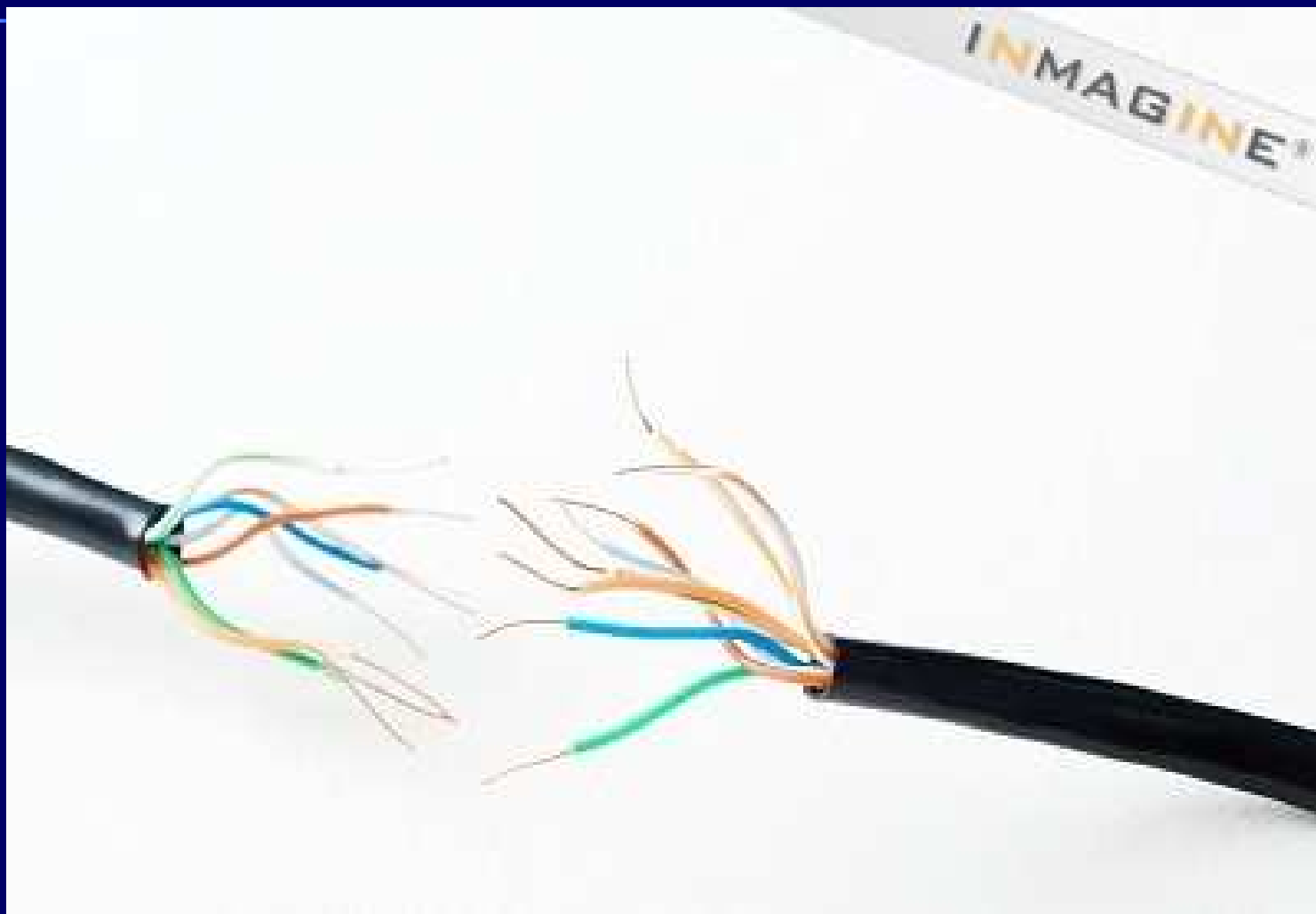
- [Fixed wing icon] National Assembly Area: Fixed wing
- [Helicopter icon] National Assembly Area: Helicopter
- [Sea icon] National Assembly Area: Sea
- [Dark blue box] Severely affected Region
- [Light blue box] Moderately affected Region
- [Brown box] Affected area



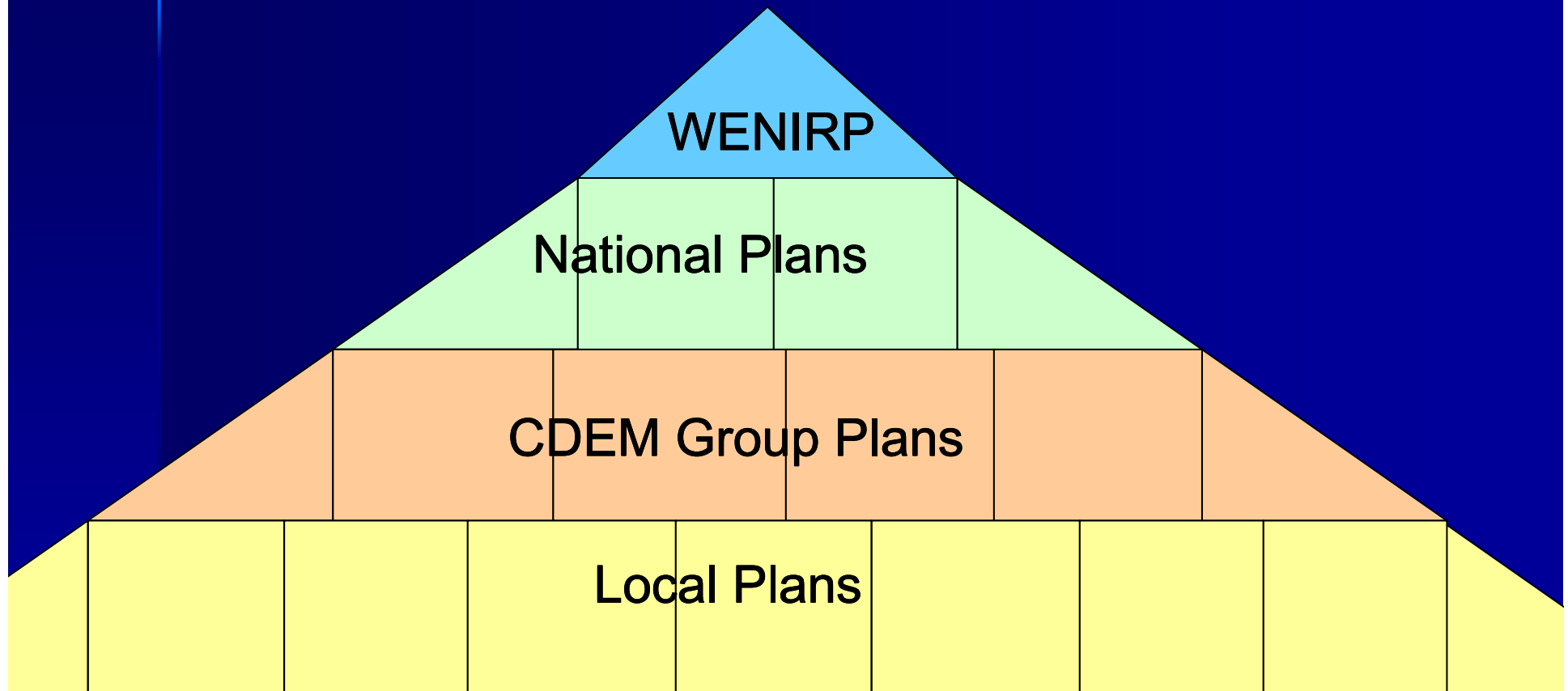
# Logistics



# Vulnerabilities to the Plan



# Vulnerabilities to the Plan



# Vulnerabilities to the Plan





# From Here....

- Follow on work with all task agencies
- Develop MCDEM capacity
- Updates (based on agency plans)
- Exercise in 2012?

**QUESTIONS**

